

Pooled Efficacy and Safety of Teclistamab in 217 Patients With Triple-Class Exposed Relapsed/Refractory Multiple Myeloma From 3 Registrational Clinical Studies

Thomas G Martin¹, Maria-Victoria Mateos², Niels WCJ van de Donk³, Zhen Cai⁴, Weijun Fu⁵, Alfred L Garfall⁶, Shinsuke Iida⁷, Yoshiaki Kuroda⁸, Ting Niu⁹, Ajay K Nooka¹⁰, Surbhi Sidana¹¹, Katherine Chastain¹², Margaret Doyle¹³, Kazuko Nishikawa¹⁴, Yang Song¹⁵, Hiroshi Yamazaki¹⁶, Jianmin Zhuo¹⁶, Angeline Zhu¹⁷, Juan Du⁵, Tadao Ishida¹⁸

¹University of California, San Francisco, San Francisco, CA, USA; ²University Hospital of Salamanca/IBSAL/CIC/IBERONC, Salamanca, Spain; ³Amsterdam University Medical Center, Vrije Universiteit Amsterdam, Amsterdam, Netherlands; ⁴First Affiliated Hospital, Zhejiang University College of Medicine, Hangzhou, Zhejiang, China; ⁵Shanghai Changzheng Hospital, Naval Medical University, Shanghai, China; ⁶Abramson Cancer Center, Perelman School of Medicine, University of Pennsylvania, Philadelphia, PA, USA; ⁷Nagoya City University Institute of Medical and Pharmaceutical Sciences, Nagoya, Japan; ⁸National Hospital Organization Hiroshima-Nishi Medical Center, Otaka, Hiroshima, Japan; ⁹West China Hospital, Sichuan University, Chengdu, Sichuan, China; ¹⁰Winship Cancer Institute, Emory University, Atlanta, GA, USA; ¹¹Stanford University School of Medicine, Stanford, CA, USA; ¹²Janssen Research & Development, Raritan, NJ, USA; ¹³Janssen Global Services, Dublin, Ireland; ¹⁴Janssen Pharmaceutical K.K., Research and Development Division, Tokyo, Japan; ¹⁵Janssen Research & Development, Beijing, China; ¹⁶Janssen China Research & Development, Shanghai, China; ¹⁷Janssen Asia Pacific Medical Affairs, Singapore; ¹⁸Japan Red Cross Medical Center, Tokyo, Japan

Key Takeaway

In the largest globally represented clinical cohort to date (N=217), teclistamab as a weight-based dosing regimen has demonstrated clinically meaningful benefits across a diverse range of patients, encompassing various weight categories and racial backgrounds. With a median follow-up of 29.2 months, teclistamab induced deep and durable responses with a manageable safety profile in patients with triple-class exposed RRMM, with <5% of patients discontinuing due to AEs

Conclusions

- ORR was 66.4% with 49.8% of patients achieving ≥CR; median DOR and PFS were 26.7 months and 15.1 months, respectively, in the Global cohort, and median DOR was not reached in those achieving ≥CR
- Infection management improved with increased use of Ig over time, aligned with International Myeloma Working Group guidelines⁸
- More than 14,000 patients worldwide have been treated with teclistamab. Increased physician understanding and experience further support physician confidence and optimal patient management and outcomes in clinical practice

Please scan QR code <https://www.congresshub.com/ASH2024/Oncology/Teclistamab/Martin>

The QR code is intended to provide scientific information for individual reference, and the information should not be altered or reproduced in any way.

Poster
Supplementary material

Acknowledgments
We thank the patients who participated in the study and their families and caregivers, the physicians and nurses who cared for patients and supported this clinical trial, staff members at the study sites, and staff members involved in data collection and analyses. This study was funded by Janssen Research & Development, LLC. Medical writing support was provided by Ashley Thomas, PharmD, of Eloquent Scientific Solutions, and funded by Janssen Global Services, LLC.

Introduction

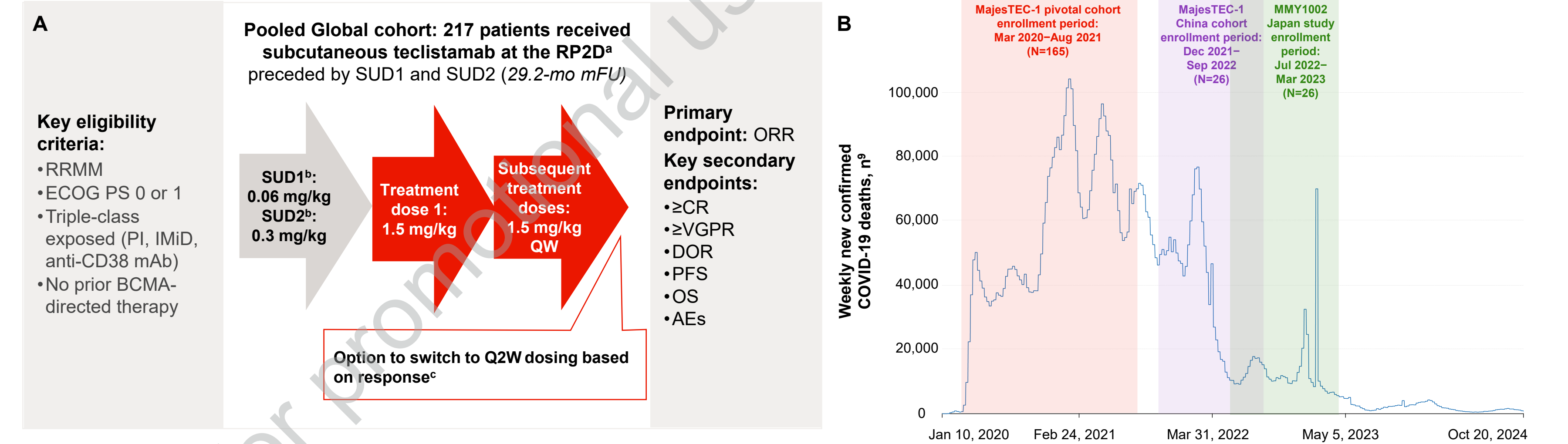
- Teclistamab is the first approved B-cell maturation antigen (BCMA) × CD3 bispecific antibody (BsAb) for the treatment of patients with triple-class exposed relapsed/refractory multiple myeloma (RRMM), with weight-based dosing and the longest study follow-up of any BsAb in multiple myeloma (30.4 months)¹⁻⁴
- Teclistamab has demonstrated rapid, deep, and durable responses with a manageable safety profile in 3 registrational studies/cohorts: the pivotal MajesTEC-1 cohort, the China cohort of MajesTEC-1, and the Japan phase 1/2 (MMY1002) study⁴⁻⁷
- Here, we present pooled data of 217 patients treated with teclistamab at the recommended phase 2 dose (RP2D)

Methods

- Global cohort (N=217) includes: 165 patients from the pivotal MajesTEC-1 study with median follow-up (mFU) of 30.4 mo (NCT03145181/NCT04557098), 26 patients from the MajesTEC-1 China cohort with mFU of 15.3 mo, and 26 patients from phase 2 of the Japan study with mFU of 14.3 mo (MMY1002, NCT04696809) (Figure 1)
- The Asian cohort (N=52^a) includes patients from the China cohort and Japan study
- The MajesTEC-1 study design was previously described³

^a3 patients with Asian ethnicity in the pivotal MajesTEC-1 were not included in the Asian cohort analysis.

Figure 1: Study design (A) and enrollment periods relative to COVID-19 pandemic (B)



*1.5 mg/kg subcutaneously QW. *2-4 days were allowed between SUD1, SUD2, and treatment dose 1. *Switch was permitted in the MajesTEC-1 study if patients achieved ≥PR after ≥4 cycles (phase 1) or ≥CR for 26 months (phase 2) and was permitted in the Japan (MMY1002) study if patients achieved ≥PR for 26 months. AE, adverse event; CR, complete response; DOR, duration of response; ECOG PS, Eastern Cooperative Oncology Group performance status; IMiD, immunomodulatory drug; mAb, monoclonal antibody; ORR, overall response rate; OS, overall survival; PFS, progression-free survival; PI, proteasome inhibitor; PR, partial response; Q2W, every other week; QW, weekly; SUD, step-up dose; VGPR, very good partial response.

Results

Study population

- Baseline characteristics were generally similar between cohorts (Table 1); the Asian cohort had lower average body weight, a higher percentage of patients with high-risk disease features, and a lower percentage of patients with triple- or penta-drug refractory status

Table 1: Patient baseline demographics and characteristics

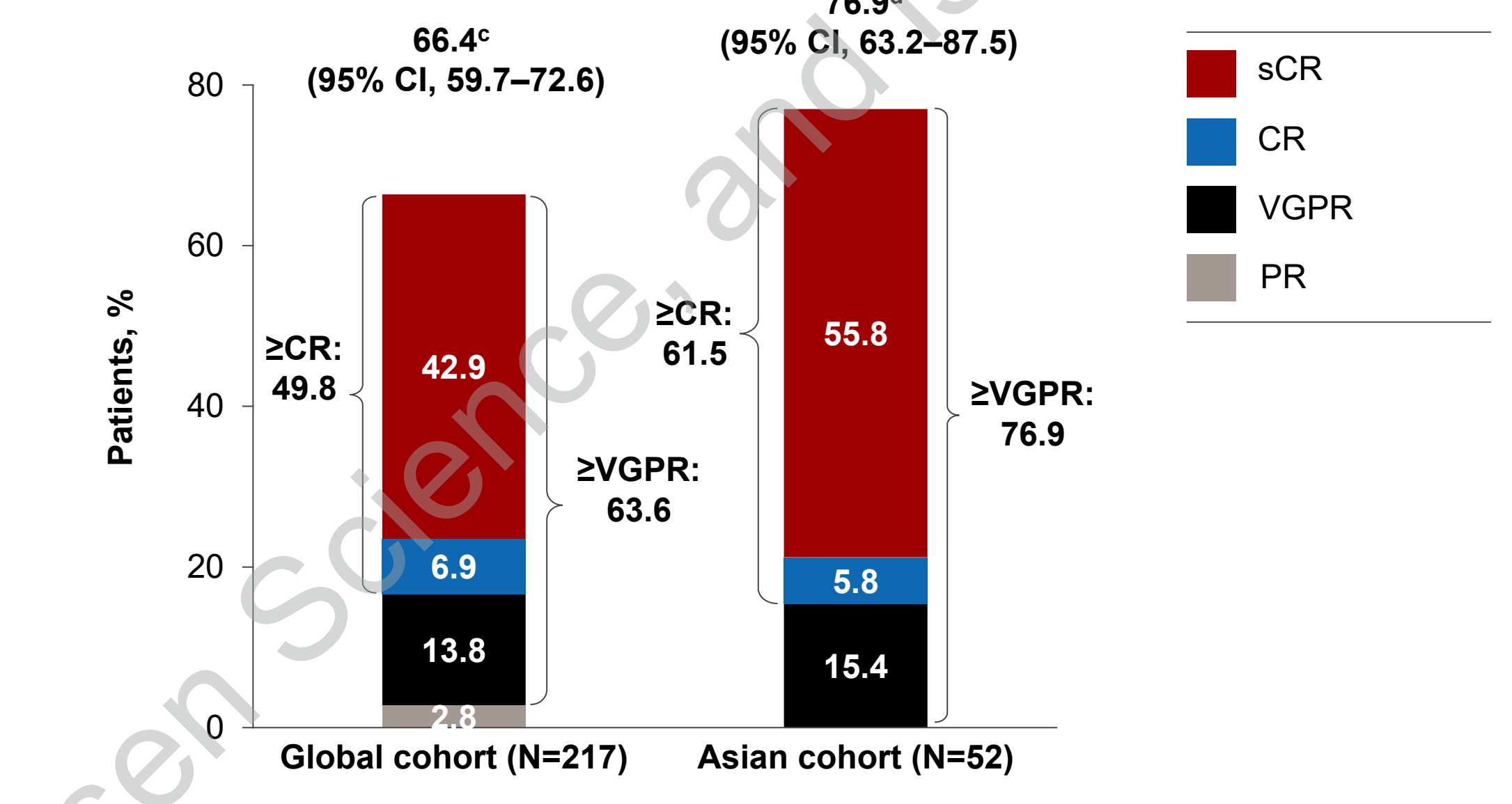
Characteristic	Global cohort (n=217)	Asian cohort (n=52)
Male, n (%)	117 (53.9)	21 (40.4)
Age, years, median (range)	65 (33-84)	67 (42-84)
Race, n (%)		
Asian	55 (25.3)	52 (100.0)
Black or African American	21 (9.7)	0
White	134 (61.8)	0
Other	7 (3.2)	0
Weight, kg, median (range)	69 (37.5-138.9)	58 (37.5-86.4)
Extramedullary plasmacytomas ≥1, n (%)	41 (18.9)	13 (25.0)
ECOG PS at baseline, n (%)		
0	79 (36.4)	24 (46.2)
≥1	138 (63.6)	28 (53.8)
ISS stage at study entry, ^a n (%)		
I	110 (51.4)	25 (48.1)
II	74 (34.6)	17 (32.7)
III	30 (14.0)	10 (19.2)
High-risk cytogenetics, ^b n (%)	58 (29.0)	20 (38.5)
Number of prior LOT, median (range)	5 (2-14)	5 (3-12)
Prior exposure, n (%)		
Triple-class	217 (100.0)	52 (100.0)
Penta-drug	142 (65.4)	26 (50.0)
Refractory status, n (%)		
Triple-class	161 (74.2)	33 (63.5)
Penta-drug	59 (27.2)	9 (17.3)

^aGlobal cohort, n=214. ^bGlobal cohort, n=200. ISS, International Staging System; LOT, line of therapy.

Efficacy

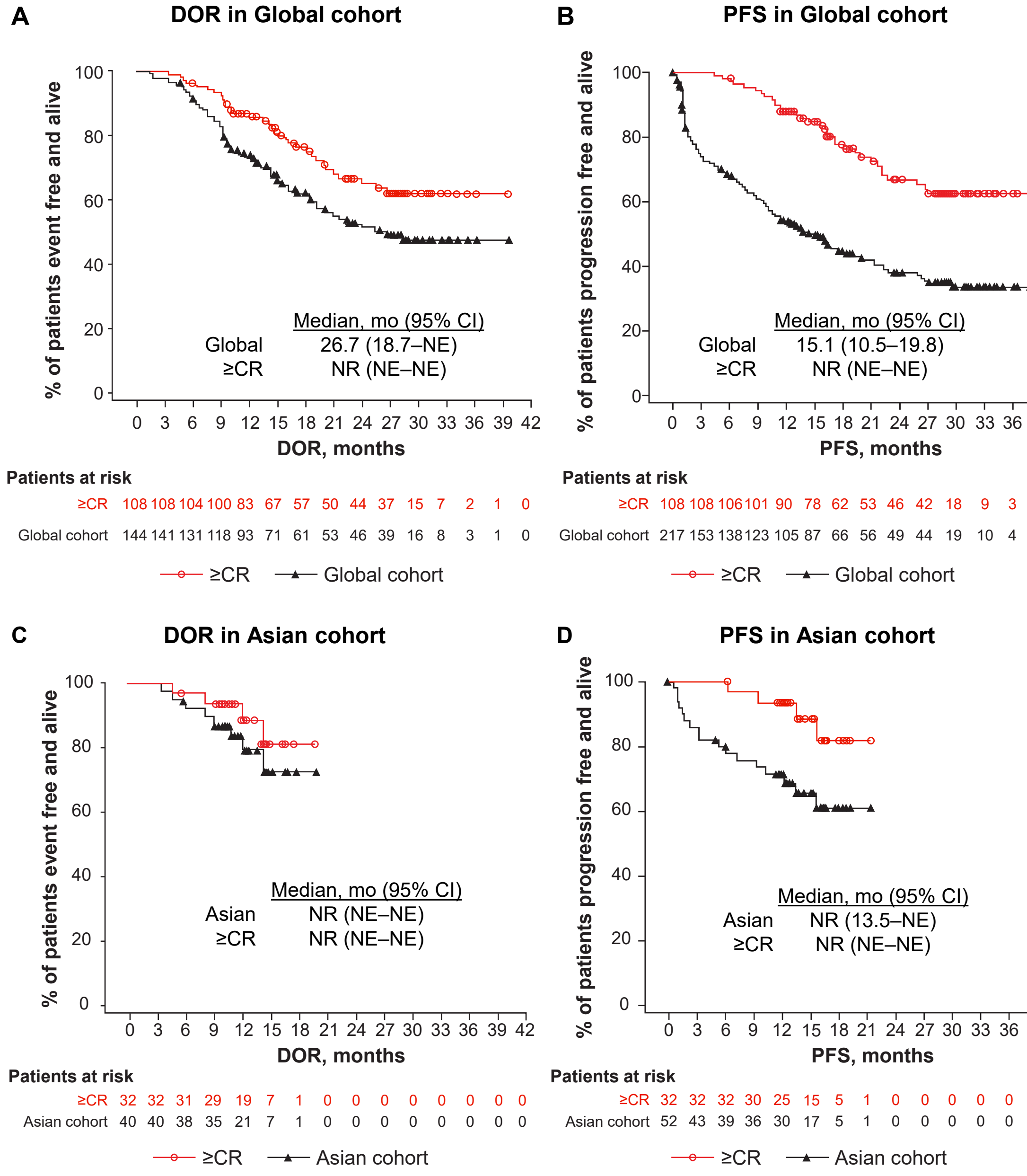
- ORR was high and responses were deep across the Global and Asian cohorts, a trend for improved outcomes was observed in the Asian cohort vs the Global cohort (≥VGPR, 76.9% vs 63.6% respectively; Figure 2)
- 88 patients (65, 10, and 13 in the pivotal cohort, China cohort, and Japan study, respectively) in the Global cohort switched to less frequent dosing per study protocol
- DOR and PFS for the Global and Asian cohorts are shown in Figure 3; OS in Global and Asian cohorts is shown in the Supplemental Figure
- Estimated 15-mo DOR, PFS, and OS were comparable in the Global and Asian cohorts (Table 2)
- PFS was longer in patients who received ≤3 prior LOT in the Global cohort (Table 2)

Figure 2: ORR^{a,b}



^aResponse assessed by independent review committee in the MajesTEC-1 study. ^bResponse in the Japan study was assessed using a computerized algorithm. ^cmFU, 29.2 months. ^dmFU, 14.9 months. sCR, stringent complete response.

Figure 3: DOR and PFS



Response assessed by independent review committee in the China cohort of the MajesTEC-1 study. Response in the Japan study was assessed using a computerized algorithm. NE, not estimable; NR, not reached.

Table 2: DOR, PFS, and OS

	Global cohort (N=217)	Asian cohort (N=52)
mFU, mo	29.2	14.9
DOR, ^a %		
Median DOR	26.7	NR
Estimated 15-mo DOR	66.0	73.0
Median DOR in ≤3 prior LOT ^b	26.7	NR
Median DOR in >3 prior LOT ^c	25.6	NR
PFS, %		
Median PFS	15.1	NR
Estimated 15-mo PFS	50.3	65.5
Median PFS in ≤3 prior LOT ^d	22.2	NR
Median PFS in >3 prior LOT ^e	10.8	NR
OS, %		
Median OS	26.3	NR
Estimated 15-mo OS	62.0	74.9
Median OS in ≤3 prior LOT ^d	NR	NR
Median OS in >3 prior LOT ^e	21.9	NR

^aGlobal cohort, n=144 and Asian cohort, n=40. ^bGlobal cohort, n=44 and Asian cohort, n=12. ^cGlobal cohort, n=100 and Asian cohort, n=28. ^dGlobal cohort, n=57 and Asian cohort, n=14. ^eGlobal cohort, n=160 and Asian cohort, n=38. NR, not reached.

Safety

- In the Global cohort, the most frequent treatment-emergent adverse events (TEAEs) were cytokine release syndrome (CRS), cytopenias, and infections (Table 3)
- Discontinuations occurred in 9/217 (4.1%) patients, 5/9 (2.3%) due to infections
- Grade 5 COVID-19 occurred in 8.3% of patients (all from the pivotal cohort which enrolled during the first peak of the COVID-19 pandemic)
- In the Asian cohort, which was enrolled post the pivotal MajesTEC-1 cohort, there was increasing use of immunoglobulin (Ig); 91.3% of patients with hypogammaglobulinemia received ≥1 dose of intravenous or subcutaneous Ig
- No discontinuations due to infections; and only 1 grade 5 infection (pneumonia in the setting of ongoing COVID-19 in China)

Table 3: Most common TEAEs

Most common ^a TEAE, n (%)	Global cohort (N=217)		Asian cohort (N=52)	
	Any Grade	Grade 3/4	Any Grade	Grade 3/4
CRS	165 (76.0)	0	46 (88.5)	0
Infection	175 (80.6)	115 (53.0)	45 (86.5) ^b	24 (46.2) ^c
COVID-19	68 (31.3)	49 (22.6)	20 (38.5)	14 (26.9)
Neutropenia	162 (74.7)	147 (67.7)	44 (84.6)	39 (75.0)
Lymphopenia	94 (43.3)	88 (40.6)	34 (65.4)	31 (59.6)
Anemia	121 (55.8)	82 (37.8)	30 (57.7)	20 (38.5)
Leukopenia	58 (26.7)	32 (14.7)	25 (48.1)	17 (32.7)
Thrombocytopenia	86 (39.6)	46 (21.2)	17 (32.7)	8 (15.4)
Hypogammaglobulinemia	64 (29.5)	4 (1.8)	28 (53.8)	1 (1.9)
Hypokalemia	45 (20.7)	17 (7.8)	20 (38.5)	9 (17.3)
Hypoalbuminemia	24 (11.1)	1 (0.5)	20 (38.5)	0
Diarrhea	75 (34.6)	9 (4.1)	18 (34.6)	3 (5.8)

^aAny-grade TEAEs occurring in ≥30% of patients in at least one cohort. ^bAny-grade infection occurred in 96.2% in the China cohort (73.1% due to COVID-19) and 69.2% in the Japan cohort. ^cGrade 3/4 infection occurred in 69.2% in the China cohort (53.8% due to COVID-19) and 11.5% in the Japan cohort.

References

1. TECVAYLI® (teclistamab). Summary of product characteristics. Leiden, Netherlands: Janssen Biologics BV; 2022. 2. TECVAYLI® (teclistamab-cqyv). Prescribing information. Horsham, PA: Janssen Biotech, Inc.; 2022. 3. Moreau P, et al. *New Eng J Med* 2022;387:495-505. 4. Garfall AL, et al. Presented at ASCO; May 31-June 4, 2024; Chicago, IL, USA & Virtual. Poster #7540. 5. Cai Z, et al. Presented at EHA; June 13-16, 2024; Madrid, Spain. Abstract #PB2717. 6. Clinicaltrials.gov identifier, NCT04696809. 7. Iida S, et al. Presented at JSH; October 11-13, 2024; Kyoto, Japan. 8. Raju NS, et al. *Lancet Haematol* 2022;9:e143-51. 9. Mathieu E, et al. Coronavirus pandemic (COVID-19). Accessed November 4, 2024. Available at: <https://ourworldindata.org/coronavirus>.

